

OPERATING CHARACTERISTICS (SHW VERSION ALPHANUMERIC MODULES)

ELECTRICAL CHARACTERISTICS

PARAMETERS	MIN.	TYP.	MAX.	UNITS
Input Voltage-High (VIH)	2.2	---	Vdd	Volts
Input Voltage-Low (VIL)	-0.3	---	0.6	Volts
Output Voltage-high (VOH) -Ioh = 0.2mA	2.4	---	---	Volts
Output Voltage-Low (VOL) IOL = 1.2mA	---	---	0.4	Volts
Power Supply Current	---	0.5	2.0	mA
Power Supply for Controller (Vdd-Vss)	0	---	7.0	Volts
Power Supply for LCD Driver (Vdd-Vo)	0	---	13.5	Volts
Input Voltage (VI)	Vss	---	Vdd*	

*Voltage is optimized according to LCD Drive Level table

OPERATING TEMPERATURE

LCD TYPE	MIN.	MAX.	UNITS
SHW Version	-20	+70	°C

STORAGE TEMPERATURE

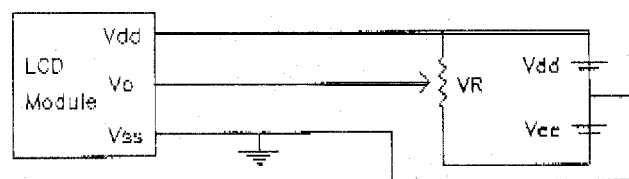
LCD TYPE	MIN.	MAX.	UNITS
SHW Version	-30	+80	°C

LCD DRIVE LEVEL (Vdd - Vo)

MODEL	SHW	
	8:1	16:1
-20 °C	9.50	10.00
-10 °C	9.40	9.80
0 °C	8.80	9.50
25 °C	7.40	9.35
50 °C	7.10	9.00

*All voltage readings are given as "typical".

Power Supply for Dual Supply Voltage Modules

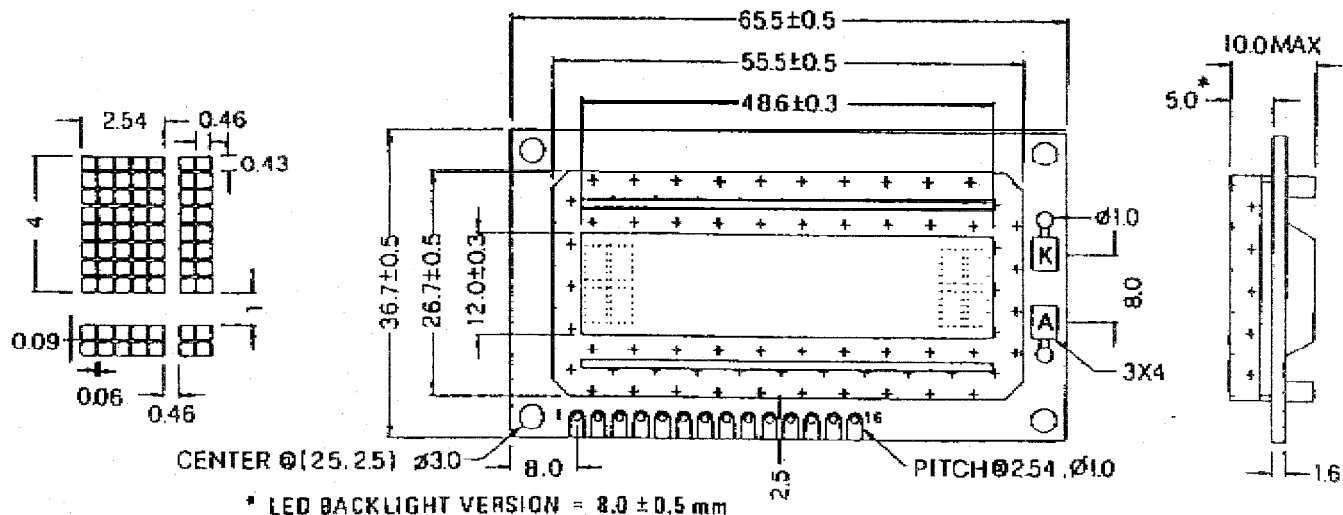


Vee is the Negative Supply Voltage
 $Vdd - Vo = \text{LCD Drive Voltage}$
 VR: 10Kohm - 20Kohm

16 CHARACTERS X 2 LINES

CHARACTER SIZE: 2.54W X 4H mm (5 X 8 DOTS)
2.54W X 3.48H mm (5 X 7 DOTS)

SIM162KXX



14 PIN CONNECTION	1	2	3	4	5	6	7	8	9	10	11	12	13	14		
16 PIN CONNECTION	1	2	3	4	5	6	7	8	9	10	11	12	13	14	15(K)	16(A)
	GND	VDD	VO	RS	R/W	E	DB0	DB1	DB2	DB3	DB4	DB5	DB6	DB7	LED(-)	LED(+)

